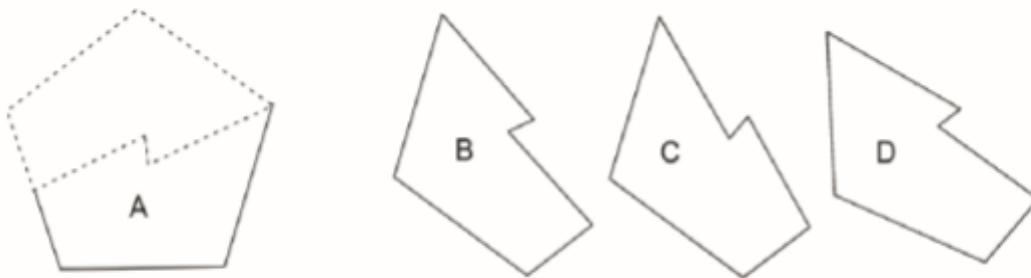




# Section 1 : Logical Thinking / Reasoning

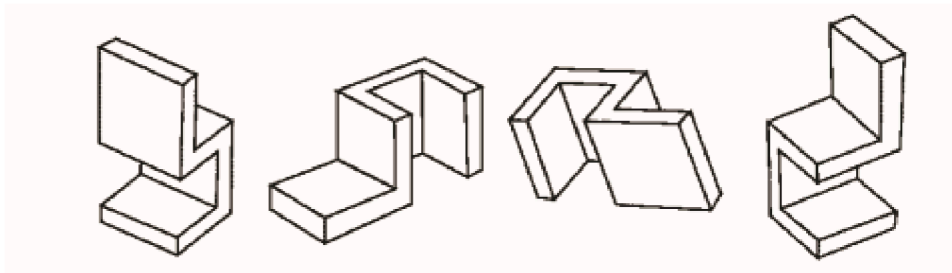
Marks : 12 x 2= 24

1. Which of the following two will fit together to form a Pentagon? The given figures are to the scale and you may rotate them.



- A and B   
  A and C   
  A and D   
  B and D

2. Which of the following two objects are similar?



- A                      B                      C                      D

- A and B   
  A and C   
  B and C   
  B and D

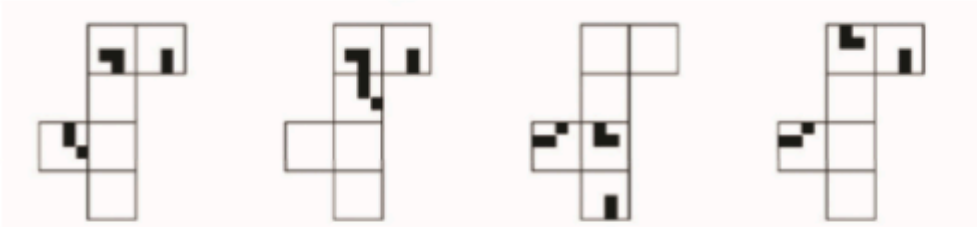
3. Observe the images below and indicate which two images are equal in surface area?



- 1                      2                      3                      4

- 1 and 2   
  2 and 3   
  1 And 4   
  3 and 4

4. Which of the paper sets when folded along the intermediate borders can form the cube as given in the image below?



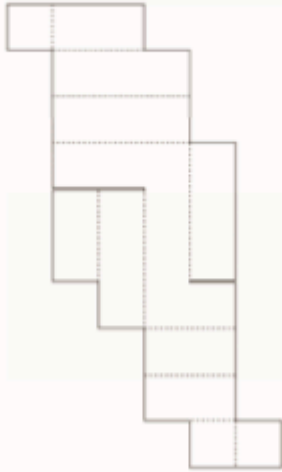
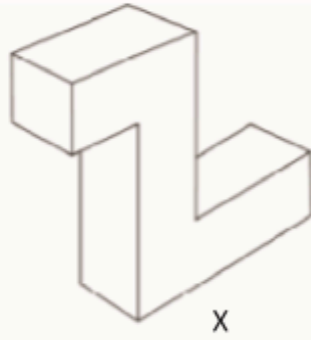
A

B

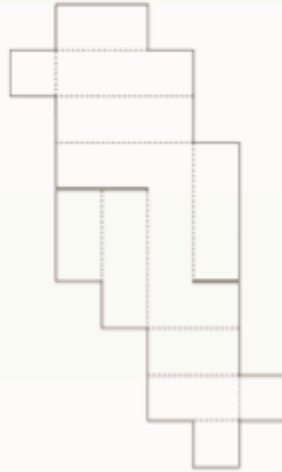
C

D

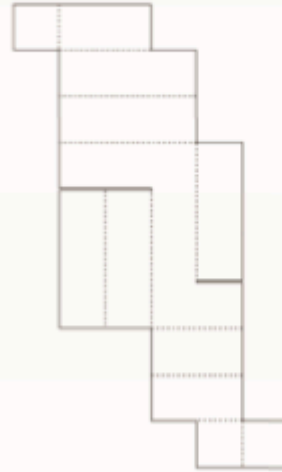
5. The drawing 'x' shows a closed box made out of cardboard. Below it are three unfolded (developed) views of the same cardboard box. Two of these options are correct. Select the wrong one.



1

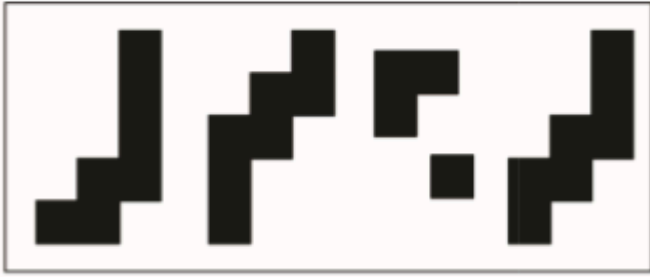


2

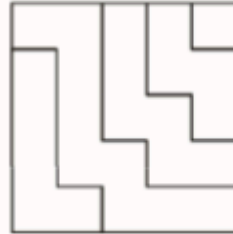
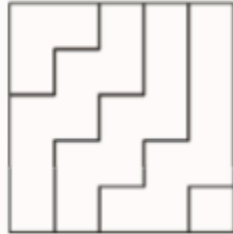
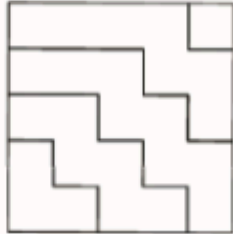
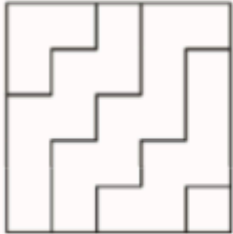


3

6. Find out which of the figures (A), (B), (C) and (D) can be formed from the pieces given in figure (X) ?



X



A

B

C

D

7. Which shape(s) fit this incomplete jigsaw?



Image 1



A

B

C

D

8. If MANGO is coded as NCQKT, how is ANANT coded?

CSCPY

BPDRY

BSBMJ

BQQMJ

9. If you rotate the word "DESIGN" 180 degrees, which letter will remain unchanged?

D

E

S

I

10. Select the alternative group, which will make a perfect square?



1



2



3



4



5

- A) 1,2,3
- B) 1,2,4
- C) 1,2,5
- D) 2,3,5

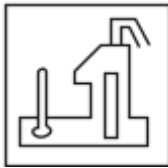
11. Look at this series: 7, 10, 8, 11, 9, 12, ... What number should come next?

- A) 7
- B) 10
- C) 12
- D) 13

12. Find out the alternative figure which contains figure (X) as its part.



X



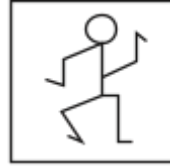
1



2



3



4

- A) 1
- B) 2
- C) 3
- D) 4

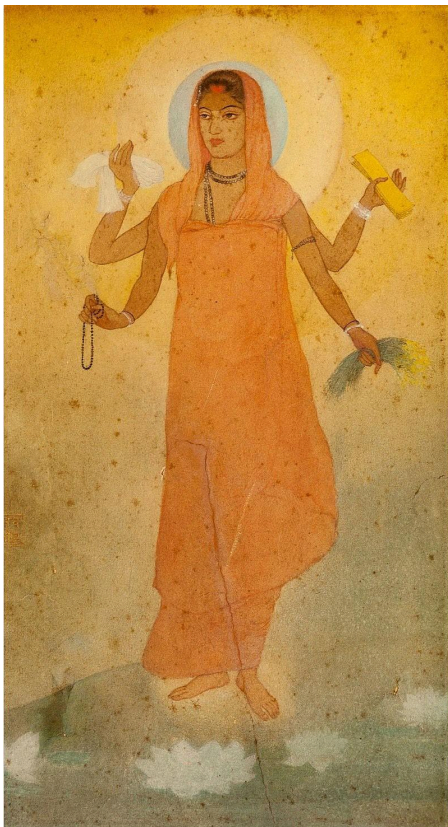
13. The term “ergonomics” is primarily concerned with

- A ) Aesthetics
- A) Human factors and efficiency
- B) Sustainability
- C) Agriculture Economics

14. What does the acronym “RGB” stand for in the context of design and digital imaging?

- A) Red, Green, Blue
- B) Royal, Gold, Black
- C) Retro, Gray, Brown
- D) Redesign, Get Information, Bring Newness

15. Who painted this painting titled “ Bharat Mata” ?



- A) Raja Ravi Varma
- B) Rabindranath Tagore
- C) Abanindranath Tagore
- D) Nandalal Bose



16. In a three-point perspective drawing, how many vanishing points are used?

- A) One
- B) Two
- C) Three
- D) Four

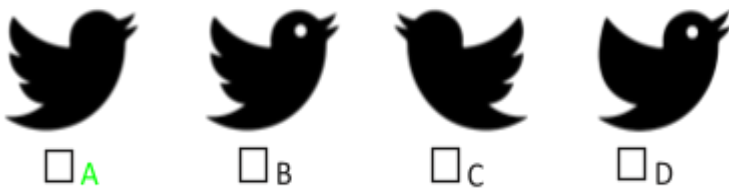
17. What does UI stand for in the context of design?

- A) Universal Image
- B) User Interaction
- C) User Interface
- D) Unique Illustration

18. The traditional Japanese art of paper folding is known as:

- A) Origami
- B) Calligraphy
- C) Ikebana
- D) Haiku

19. Identify the correct logo of the 'Twitter' ?



20. For a project focused on sustainability, which material would be the most environmentally friendly for creating product packaging?

- A) Plastic
- B) Styrofoam
- C) Biodegradable cardboard
- D) Aluminum

21. Which of the following is not a primary colour?

- A) Red
- B) Blue
- C) Yellow
- D) Green

22. If you mix equal parts of red and blue paint, what colour do you get?

- A) Purple
- B) Orange
- C) Green

D) Pink

23. If you fold a piece of paper in half 3 times, how many layers will you have?

- A) 6
- B) 8
- C) 10
- D) 12

24. Name this character, sketched by R.K. Laxman ?



- A) Babu Rao
- B) The Common Man
- C) Maharaja
- D) Malgudi Grandpa

25. Name this character from a famous comic.



- A) Popeye the Sailor
- B) Sesame Street

- C) Hobbes
- D) Garfield

**26. What brand is associated with the punch line “Think Different”?**

- A) Microsoft
- B) Apple
- C) Google
- D) IBM

**27. The Indian state known as the “Land of Five Rivers” is:**

- A) Punjab
- B) Haryana
- C) Uttar Pradesh
- D) Rajasthan

**28. Which of the following is a renewable source of energy?**

- A) Coal
- B) Natural Gas
- C) Solar
- D) Nuclear

**29. Which Indian state hosts the famous ‘Horn bill’ Festival?**

- A) Assam
- B) Nagaland
- C) Manipur
- D) Arunachal Pradesh

**30. What does the term ‘OTT’ stand for, in the context of media platforms?**

- A) Other than Terrestrial
- B) On the Top
- C) Over the Top
- D) Over the Terrestrial

**31. Which classical dance form originated in the state of Kerala?**

- A) Bharatanatyam
- B) Kuchipudi
- C) Kathakali
- D) Odissi

**32. Which Indian classical music instrument is a stringed instrument played with a bow?**

- A) Sitar
- B) Sarod
- C) Sarangi
- D) Santoor

**33. The roaring lion is an iconic logo associated with which film studio?**

- A) Metro-Goldwyn-Mayer (MGM)
- B) Warner Brothers
- C) Paramount Pictures
- D) Universal Pictures

**34. Who directed the critically acclaimed film “Dangal,” starring Aamir Khan?**

- A) Karan Johar
- B) Zoya Akhtar
- C) Rajkumar Hirani
- D) Nitesh Tiwari

**35. Indian film for 93rd Oscars’ Best International Feature Film ?**

- A) Court
- B) Village Rockstars
- C) Ludo
- D) Jallikattu

**36 . Which Indian city is famous for its blue pottery?**

- A) Jaipur
- B) Agra
- C) Varanas
  
- D) Kolkata

**37 . The traditional textile design technique of ‘Ikat’ is associated with which Indian states?**

- A) Gujarat and Rajasthan
- B) Odisha and Andhra Pradesh
- C) Tamil Nadu and Kerala
- D) West Bengal and Assam

**38 . Who directed the classic Indian film ‘Pather Panchali’?**

- A) Satyajit Ray
- B) Ritwik Ghatak
- C) Mrinal Sen
- D) Bimal Roy

